

B

Basic Pump



Self Priming Centrifugal Pump

Model RD2A31 - B

Size 3" x 2"

PUMP SPECIFICATIONS

Size: 3" x 2" (76 mm x 51 mm) Flanged.

Casing: Ductile Iron No. 65-45-12.

Maximum Operating Pressure 144 psi (993 kPa).*

Enclosed Type, Four Vane Impeller: Aluminum 356-T6.

Handles 1/4" (6,4 mm) Diameter Spherical Solids.

Impeller Shaft: Steel No.1045.

Rotor: Copper Alloy C93200.

Bearing Housing: Ductile Iron No. 65-45-12.

Bearing Housing Lubrication: Grease.

Body Cover: Ductile Iron No. 65-45-12.

Center/Spacer Plate: Ductile Iron No. 65-45-12.

Radial Bearing: Permanently Sealed Single Row Ball Type.

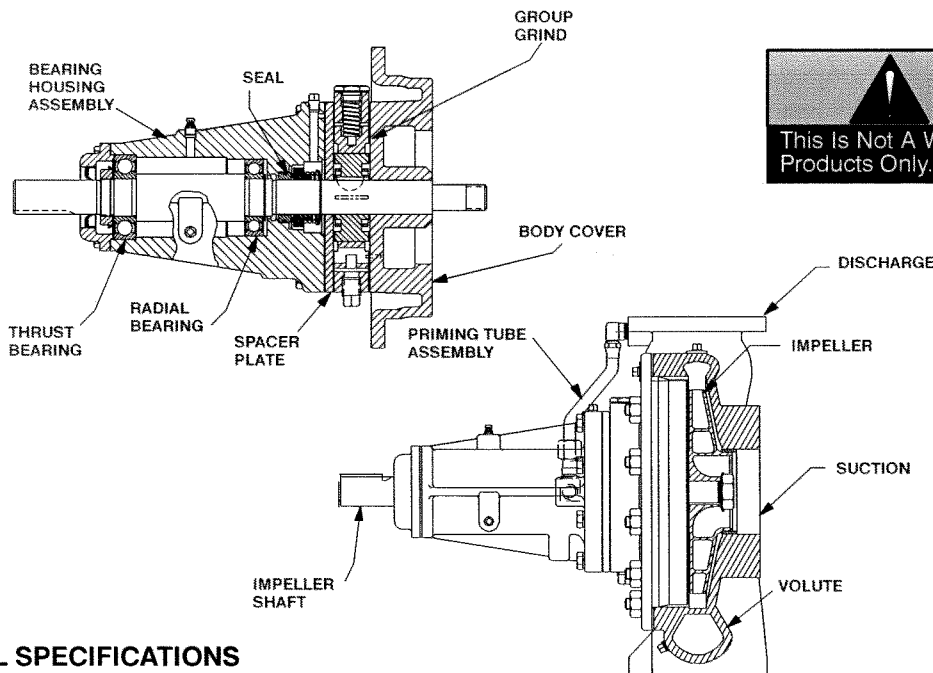
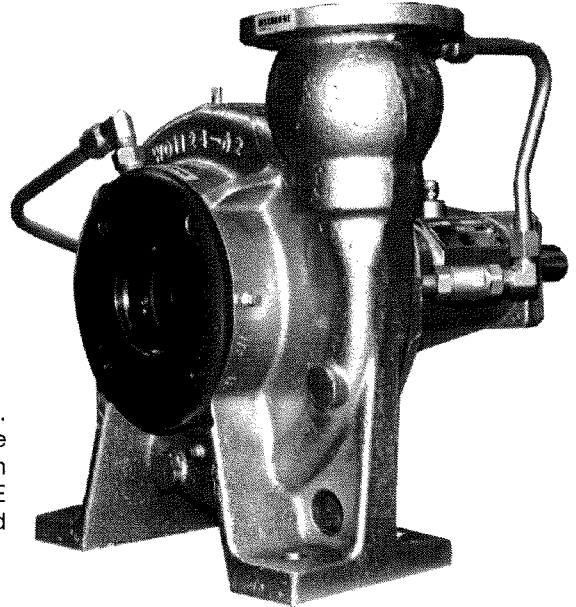
Thrust Bearing: Permanently Sealed Single Row Ball Type.

Gaskets: Vegetable Fiber, PTFE and Cork.

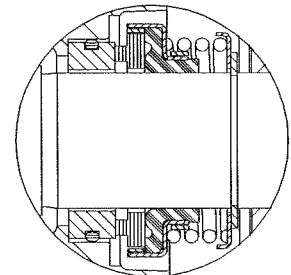
Priming: Rotary Vane Type, with Built-in Spring-Loaded Priming Assist Valve.

Optional Equipment: Cast Steel 70-36 Threaded Suction and Discharge Companion Flange Kit, Copper Alloy C93700 Impeller, Group Grind with Cast Iron Rotor; Stainless Steel No. 416 Impeller Shaft; Buna-N Seal, PTFE Seal with Fluorocarbon O-Ring, PTFE Seal with Buna-N O-Ring, Oil Filled Bearing Housing Assembly.

*Consult Factory for Applications Exceeding Maximum Pressure and/or Temperature Indicated.



SEAL AREA DETAIL



CAUTION
This Is Not A Water Pump. Use For Petroleum Products Only.

SEAL SPECIFICATIONS

Seal: Mechanical; Self-Lubricated. Fluorocarbon Elastomers (DuPont Viton[®] or Equivalent). Carbon Rotating Face; Ni-Resist Stationary Face; Maximum Temperature of Liquid Pumped is 160°F (71°C).*



THE GORMAN-RUPP COMPANY • MANSFIELD, OHIO

GORMAN-RUPP OF CANADA LIMITED • ST. THOMAS, ONTARIO, CANADA

www.grpumps.com

Specifications Subject to Change Without Notice

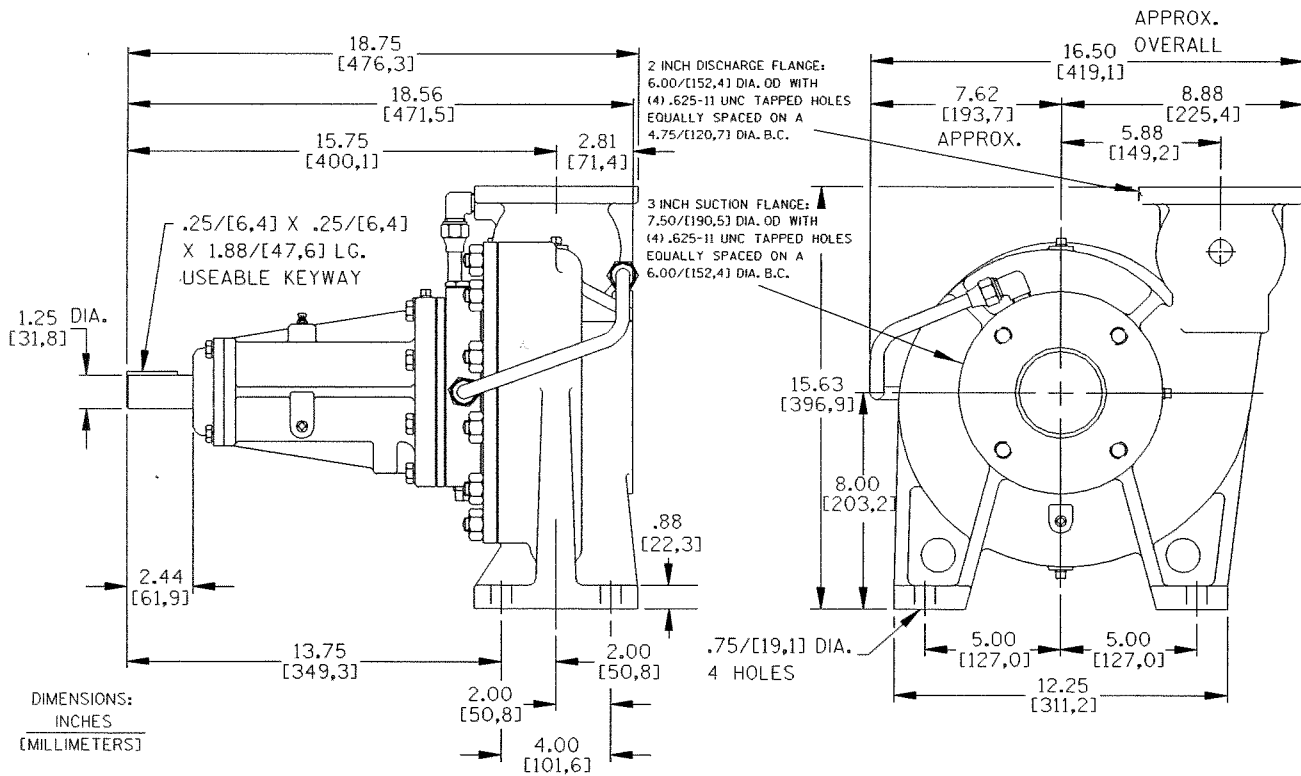
Printed in U.S.A.

Specification Data

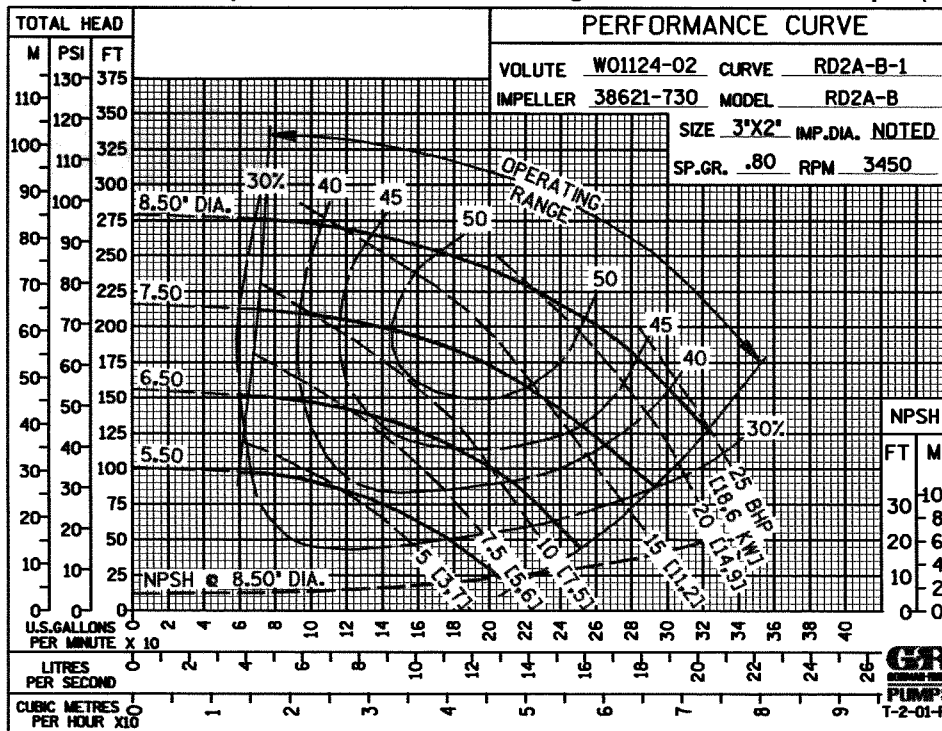
SECTION 35, PAGE 200

OVERALL DIMENSIONS
and
APPROXIMATE WEIGHTS

PUMP NET WEIGHT: 154 LBS. (69,9 KG.)
SHIPPING WEIGHT: 166 LBS. (75,3 KG.)
EXPORT CRATE SIZE: 5.6 CU. FT. (0,16 CU. M.)



Air Release Valve Required When Static Discharge Pressure Exceeds 8 psi (55 kPa).



THE GORMAN-RUPP COMPANY • MANSFIELD, OHIO

GORMAN-RUPP OF CANADA LIMITED • ST. THOMAS, ONTARIO, CANADA

Specifications Subject to Change Without Notice

Printed in U.S.A.